



Fellowships in History of Art and Visual Culture at The Met

History of Art and Visual Culture Fellowships are offered to individuals working on research projects in fields including, but not limited to, History of Art and Architecture, Anthropology and Archaeology, Linguistics and Philology, English, Linguistics, Religious Studies, and Musicology. Applicants submit a specific, independent research project proposal that uses the Museum's collection and resources.

There are several subcategories included within this fellowship type, including:

- Theodore Rousseau Fellowships, which support 12 months of travel abroad to conduct research related to paintings collections in Europe.
- Slifka Foundation Interdisciplinary Fellowships, which combine art historical research with training in the technical investigation of the collections. The 2023-2024 project, provisionally titled, "Assyrian Sculpture Court Pigment Project," is sponsored by the Department of Ancient Near Eastern Art, in collaboration with Objects Conservation and Scientific Research. The project involves conducting a comprehensive analysis and reconstruction of trace pigments present throughout the Museum's Assyrian Sculpture Court—the largest collection of sculptural reliefs from first millennium B.C. Assyria (modern Iraq) in the U.S., and one of the most iconic spaces in the Museum. The ideal candidate has a PhD in art history or is an advanced graduate student with a specialization in ancient Assyrian art. More information about this opportunity can be found [here](#).

These fellowships are open to PhD candidates, who are working on their PhD at the time they submit their application (junior fellows), and to those who hold a PhD on the date of application and/or are well-established scholars (senior fellows). Additional requirements vary depending on the fellowship.

The fellowship period is September 1 through August 31. All fellows, except Theodore Rousseau Fellows, must be in residence at The Met for the entire fellowship period. Junior fellows receive a stipend of \$42,000. Senior fellows receive a stipend of \$52,000. All fellows also receive an additional \$6,000 for travel.

All applications, including letters of recommendation, must be received by Friday, November 4 at 5:00 p.m. EST / 10:00 p.m. GMT.



For more information and to apply, please visit <http://www.metmuseum.org/about-the-met/fellowships>.
Questions may be sent to Academic.Programs@metmuseum.org.



Interdisciplinary Fellowships at The Met

This one-year fellowship encourages cross-departmental projects that explore connections between various cultures and collections in the Museum and that go beyond traditional boundaries, bridging the visual arts and other disciplines in the humanities, social sciences, performing arts, and fine arts. Applicants must propose an independent research project that relates to and makes use of the Museum's resources, including its collections, libraries, archives, and programs. Fellows may explore connections between public practice, education, and the humanities, relating but not limited to curriculum development, gallery teaching, and interpretation. Accepted fellows work with one or more supervisors and mentors across department areas and have the opportunity to work closely with other members of the staff and as part of the larger community of fellows at The Met.

Fellowship applications integrating independent research projects and artistic practice are welcome. However, since the Museum has a separate program for artist residencies, the Interdisciplinary Fellowship is not intended to culminate in an exhibition, installation, or public program, nor can the Museum provide studio space for fellows.

The fellowship is open to candidates holding an MA or MFA, or currently pursuing or holding a PhD in any field in the arts, humanities, or social sciences. We strongly encourage applications from individuals who are members of groups or from disciplines that have been historically underrepresented in the museum field.

The fellowship period is September 1 through August 31. All fellows must be in residence at The Met for the entire fellowship period. Junior fellows receive a stipend of \$42,000. Senior fellows receive a stipend of \$52,000. All fellows also receive an additional \$6,000 for travel.

All applications, including letters of recommendation, must be received by Friday, November 4 at 5:00 p.m. EST / 10:00 p.m. GMT.

For more information and to apply, please visit <http://www.metmuseum.org/about-the-met/fellowships>. Questions may be sent to Academic.Programs@metmuseum.org.

Curatorial Research Fellowships at The Met

This fellowship is devoted to a specific Met project and provides curatorial training and an opportunity to engage with a community of scholars from around the world. The fellow is fully integrated into a curatorial department and works with a curatorial mentor to learn best practices in cataloguing, with the goal of developing full catalogue information for selected object records. The fellow transfers all paper-based records for the selected group of objects to The Museum System (TMS) collections-management database for integration on the Museum's website. The fellow also works with conservators, scientists, educators, Digital Department staff, and other professionals during their tenure.

The following project is available for 2023-2024:

- **Egyptian Art** – to assist with researching, cataloging, updating object information, and writing labels for New Kingdom pottery excavated at Malqata while considering new ways to display and share this information with the public.

The fellow also has the opportunity to undertake an independent project in consultation with his or her supervising curator. The fellow is fully integrated into the life of The Met and are given unique access to the inner workings of the Museum through a rich program of tours, roundtable discussions, and workshops.

Applicants must hold a doctoral degree (or international equivalent) in art history or archaeology with a specialization related to the project above. The individual must have received the degree within five years of the start date of the fellowship (that is, September 1 of the year following the application deadline).

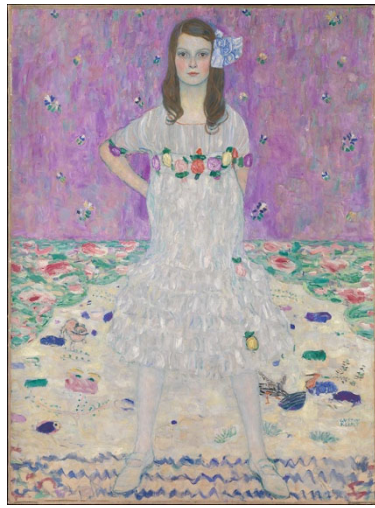


The fellowship period is September 1 through August 31 and carries the possibility of renewal for a second year. All fellows must be in residence at The Met for the entire fellowship period. Curatorial Research Fellows are temporary full-time exempt employees of The Met and receive an annual salary of \$61,500 plus fringe benefits, and a stipend of up to \$6,000 for research-related travel.

All applications, including letters of recommendation, must be received by Friday, November 4 at 5:00 p.m. EST / 10:00 p.m. GMT. Finalists for the Curatorial Research Fellowship will be called for an interview.

**THE
MET**

For more information and to apply, please visit <http://www.metmuseum.org/about-the-met/fellowships>.
Questions may be sent to Academic.Programs@metmuseum.org.



Eugene V. Thaw Fellowship for Collections Cataloguing at The Met

Unique among Met fellowships, the purpose of this 12-month position in the Department of European Paintings is to train students and emerging museum professionals in the practice of cataloguing works of art, including researching and compiling provenance information, exhibition histories, and bibliographic references, as well as documenting critical opinions from literature. The position will also provide training in The Museum System (TMS) database that is used throughout the museum world. These skills are central to the mission of all museums to inform and educate scholars and the general public.

The fellow will participate in a range of activities over the 12-month period, typically focusing on a specific portion of the collection, and will work closely with curators, conservators, and cataloguers under the direction of the Senior Collections Cataloguer. In consultation with European Paintings colleagues, the fellow will have opportunities to develop areas of personal interest within the closely linked fields of collections cataloguing and art history. At the discretion of the department head, the fellow may also undertake travel related to research of objects in the European Paintings collection.

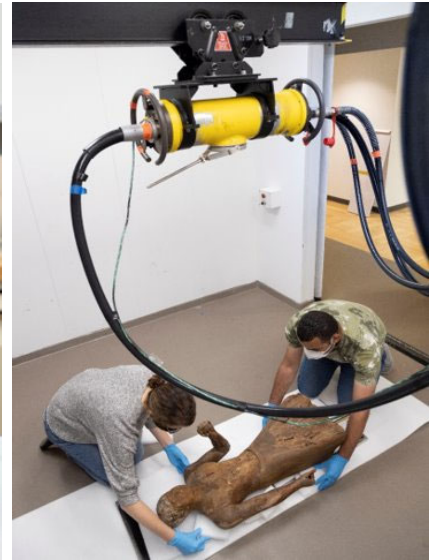
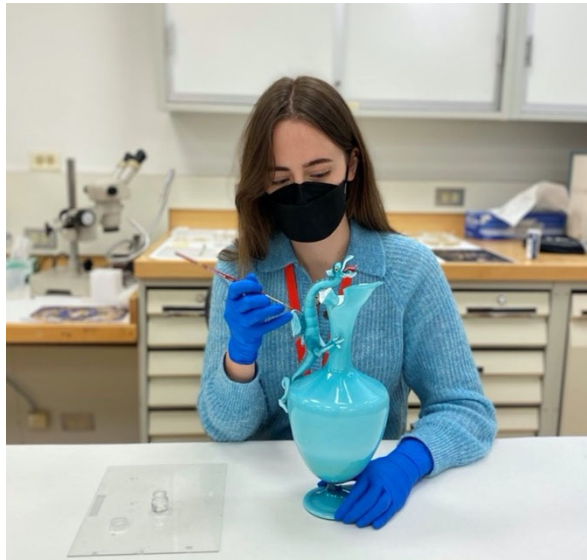
Eligible candidates should either have completed their MA or be ABD Ph.D. candidates. A background in cataloging is helpful but not required. Basic language skills pertaining to the area in which the applicant proposes to work is essential.

The fellowship period is September 1 through August 31. All fellows must be in residence at The Met for the entirety of their 12-month fellowship period. Eugene V. Thaw Fellows are temporary full-time exempt employees of The Met and receive an annual salary of \$42,000, fringe benefits, a stipend of up to \$2,000 for research-related travel.

All applications, including letters of recommendation, must be received by Friday, November 4 at 5:00 p.m. EST / 10:00 p.m. GMT. Finalists for the Eugene V. Thaw Fellowship for Collections Cataloguing will be called for an interview.



For more information and to apply, please visit <http://www.metmuseum.org/about-the-met/fellowships>. Questions may be sent to Academic.Programs@metmuseum.org.



Conservation Fellowships and Scientific Research Fellowships at The Met

There are two types of Conservation and Scientific Research Fellowships: junior and senior. Junior fellows are those applicants who have recently completed graduate-level training. They work closely with Met staff to receive training in scientific research and conservation practices. Senior fellows are well-established professionals with at least eight years of experience in the field and a proven publication record, or those who have their PhD in hand by the deadline date. They propose and work on a specific research project that makes use of the Museum's collection and/or resources.

Recent master's graduates, PhD candidates, postdoctoral scholars, and senior scientists and researchers are eligible to apply. We encourage applications from those with a background in, but not limited to, conservation, conservation science, chemistry/physical chemistry, botany, and earth sciences/geology.

The fellowship period is September 1 through August 31. All fellows must be in residence at The Met for the entire fellowship period. Junior fellows receive a stipend of \$42,000. Senior fellows receive a stipend of \$52,000. All fellows also receive an additional \$6,000 for travel.

All applications, including letters of recommendation, must be received by Friday, December 2 at 5:00 p.m. EST / 10:00 p.m. GMT.

For more information and to apply, please visit <http://www.metmuseum.org/about-the-met/fellowships>. Questions may be sent to Academic.Programs@metmuseum.org.



For more information and to apply, please visit <http://www.metmuseum.org/about-the-met/fellowships>. Questions may be sent to Academic.Programs@metmuseum.org.

Leonard A. Lauder Fellowships in Modern Art at The Met

Founded in 2013, The Leonard A. Lauder Research Center for Modern Art is a leading center for scholarship on modern art. While maintaining a special focus on the study of Cubism and its enduring impact, the Research Center promotes innovative research in the broader field of modern art, architecture, design, and visual culture around the world from the late nineteenth century to around 1960. Each year, The Met offers three fellowships in the Research Center: a two-year position for a predoctoral candidate who is embarking on a dissertation; a postdoctoral fellowship for a



qualified scholar at an early career stage, which may be one or two years in duration; and a midcareer fellowship for an established scholar with an appropriate publication record. Fellowships in The Leonard A. Lauder Research Center for Modern Art offer an exceptional opportunity for scholars of modernism to conduct focused research on an independent project, while contributing to the activities and programs of the Research Center. Recent fellowships have supported the work of scholars focused on such topics as Art Brut, Czech Modernism, Dada, Brazilian modern art, interwar European Abstraction, Romanian avant-gardes, Russian Constructivism, and Surrealism, in addition to the agents, dealers, and reception of Cubism.

Predocctoral fellowships are for 24 months and must take place between September 1, 2023, and August 31, 2025. Postdoctoral fellowships may be 12 or 24 months in duration and must take place between September 1, 2023, and (depending on the length of the fellowship) August 31, 2024, or August 31, 2025. All Leonard A. Lauder Fellows must be in residence at The Met during the fellowship period.

The stipend amount for one year is \$47,000 for predoctoral fellows, \$57,000 for postdoctoral fellows, and \$65,000 for midcareer fellows. During the fellowship period and at the Museum's discretion, Leonard A. Lauder Fellows receive a travel stipend of \$6,000.

All applications, including letters of recommendation, must be received by Friday, November 4 at 5:00 p.m. EST / 10:00 p.m. GMT.

For more information and to apply, please visit <http://www.metmuseum.org/fellowships>. Questions may be sent to Laudercenter@metmuseum.org with Academic.Programs@metmuseum.org copied.